

Connecting with Nature

AONB Partnership & Ambassador field event
July 2022





Timetable

10:00-10:20 - *Event welcome, introduction & update* - Chris Woodruff - AONB Manager

10:20-10:40 - **Our commitment to Nature** – Focus on Farming - Pete Youngman - AONB Project Officer

10:40-11:00 - **Our commitment to Nature** - Focus on Special Species & parish engagement - Lindi Rich – AONB Wildlife Officer

11:00-11:15 - Break

11:15 -12:15 – **Our commitment to Nature** - *Routes* - Emma Molony with optional creative session

12:15-13:00– Lunch

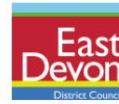
13:00 -14:30– Walk

Introduction

Alistair Handyside MBE
(CLA)
Chairman



Penny Mills
(CPRE)
Vice Chairman



Welcome and introduction



Chris Woodruff

Manager
(FT)



Pete Youngman

Project Officer &
FiPL advisor
(FT)



Kelly Pritchard

Comms Officer
(PT)



Lou Maddocks

Admin Officer (FiPL)
(PT)



Lindi Rich

Wildlife Officer
(PT)



Our work

- **x2 new staff**
- **Farming in Protected Landscapes launched**
- **Farmer collaboration groups**
- **Special species and nature recovery**
- **Arts Council funded nature connectedness**
- **Lottery Funded grey long eared bat project – *‘the true nightrider’* with Bat Conservation Trust**
- **Natural Flood Management**
- **Hosted the National AONB Conference in Devon**
- **Glover Landscape Review consultations**



Our work

- **East Devon Way** – improving links to/from SWCP ... with Ambassadors and Ramblers
- **Power lines** – undergrounding sites at Budleigh Salterton and Fire Beacon Hill with Western Power
- **Supporting local community action** - through our Communities Project Fund
- **Planning and policy work** – bat consultation zones with EDDC and Natural England
- **Supporting partnerships**
 - Devon Local Nature Partnership - Right Place Right Tree guidance, Devon Nature Recovery Network map
 - East Devon Catchment Partnership – River Axe initiative and NFM
 - River Otter Beaver Project - Devon WT & CDE

The Colchester Declaration

Nature Recovery, Species Recovery and Nature Connectedness: key pledges within the Declaration and their relationship to healthier and more connected landscapes and communities.

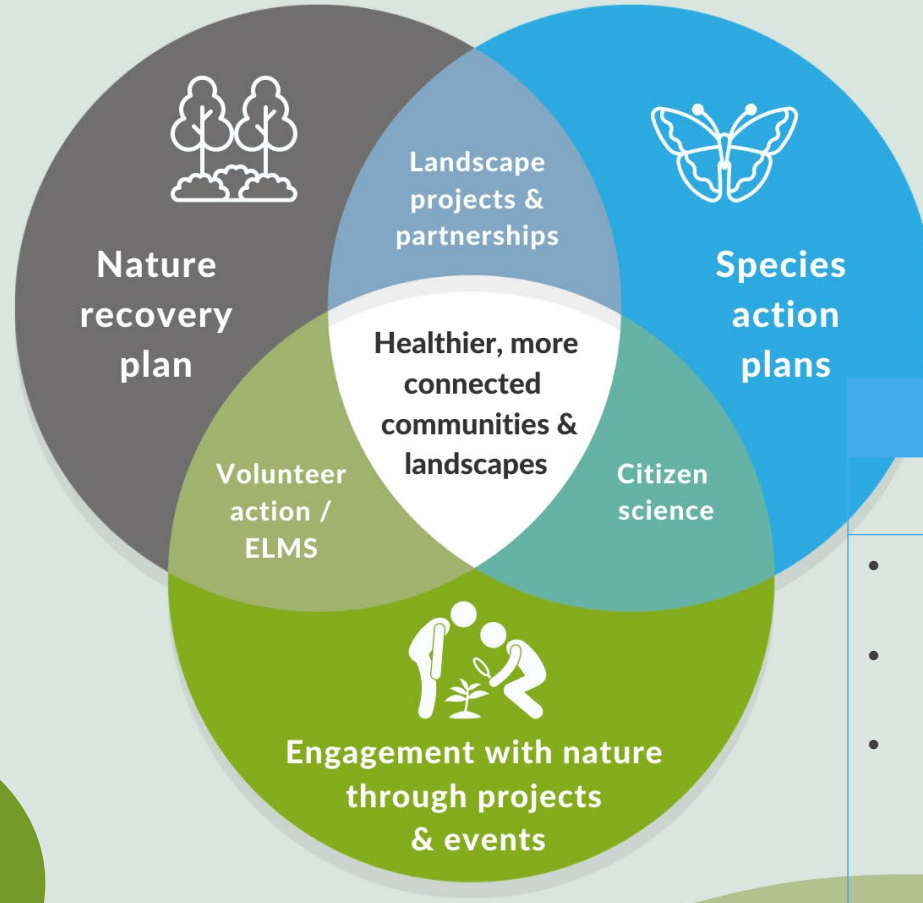
State of Nature report and outline for a Nature Recovery Plan

Nature Recovery

100k Ha habitat outside protected sites by 2030

36k Ha of new woodland by 2030

200k Ha SSSI in favourable condition by 2030



Species Recovery

30 species off the threatened list by 2030

Our 'elusive 8'

Bats	Butterflies	Plants
<ul style="list-style-type: none"> Greater Horseshoe Grey long-eared Bechstein's 	<ul style="list-style-type: none"> Pearl Bordered Fritillary Small Pearl Bordered Fritillary Brown Hairstreak 	<ul style="list-style-type: none"> Heath Lobelia Devon Whitebeam

May 2021 Arts Council funding for nature connection project 'Routes'

Nature Connectedness

A model for emotional connection to nature by 2020

Local Nature Recovery

Environment viewer map : www.devon.gov.uk/viewer

The screenshot displays a web-based environment viewer map. The map area is filled with various colored and patterned polygons representing different nature recovery areas and habitats. A search bar at the top left contains the text "Find address or place". A toolbar with icons for home, print, and other functions is located below the search bar. A popup window titled "(4 of 6)" is open over a purple patterned area, providing detailed information:

Primary Habitat	Lowland Dry Acid Grassland with woodland W10
Primary Habitats	Lowland Dry Acid Grassland with woodland W10
Secondary Habitats	Lowland Heathland with woodland W15
Landscape Character	2A
Type: Code	
Landscape Character Type: Label	Steep wooded scarp slopes
Other Potential Habitat:	Lowland Meadow, Upland Hay Meadow, Lowland Dry Acid Grassland, Lowland Heath, Reedbeds, Lowland Raised Bog, Coastal Vegetated_shingle, Coastal Sand Dunes

At the bottom of the popup is a "Zoom to" link. The map also shows labels for "SIDMOUTH" and "South West Coast Path". A "Layer List" panel on the right side of the map is open, showing a list of layers with checkboxes:

- Priority Habitat Inventory - Priority Habitats Inventory (South) (England) © Natural England
- Contours
- Ecology and Geology
- Nature Recovery Network
- Existing Habitats
- Core Nature Areas
- Cropland
- Grassland
- Heathland and shrub
- Marine inlets and Transitional Water
- Rivers and lakes
- Sparsely vegetated land
- Urban
- Wetland
- Woodland and forest
- Nature Areas
- Habitat Suitability
- Primary Habitats
- Secondary Habitats
- Nature Recovery Areas

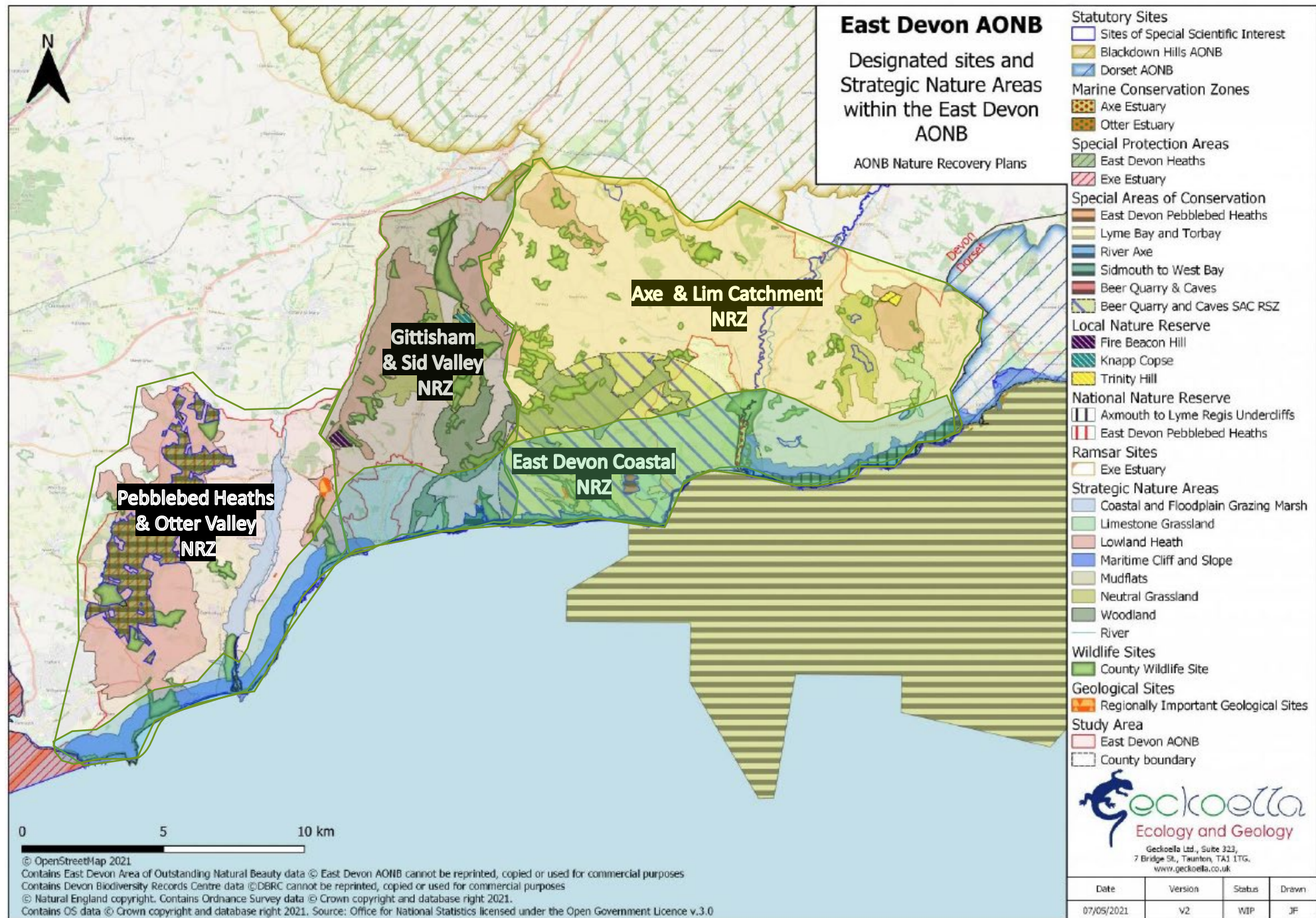
Nature Recovery Plan

NRZ key components:

- Landscape character
- Catchment
- SNA/ Priority habitats
- Priority species/sites/ habitat

Use above to develop:

- Themed approach/Ops
- NRP overarching priorities
- NR Focus Areas

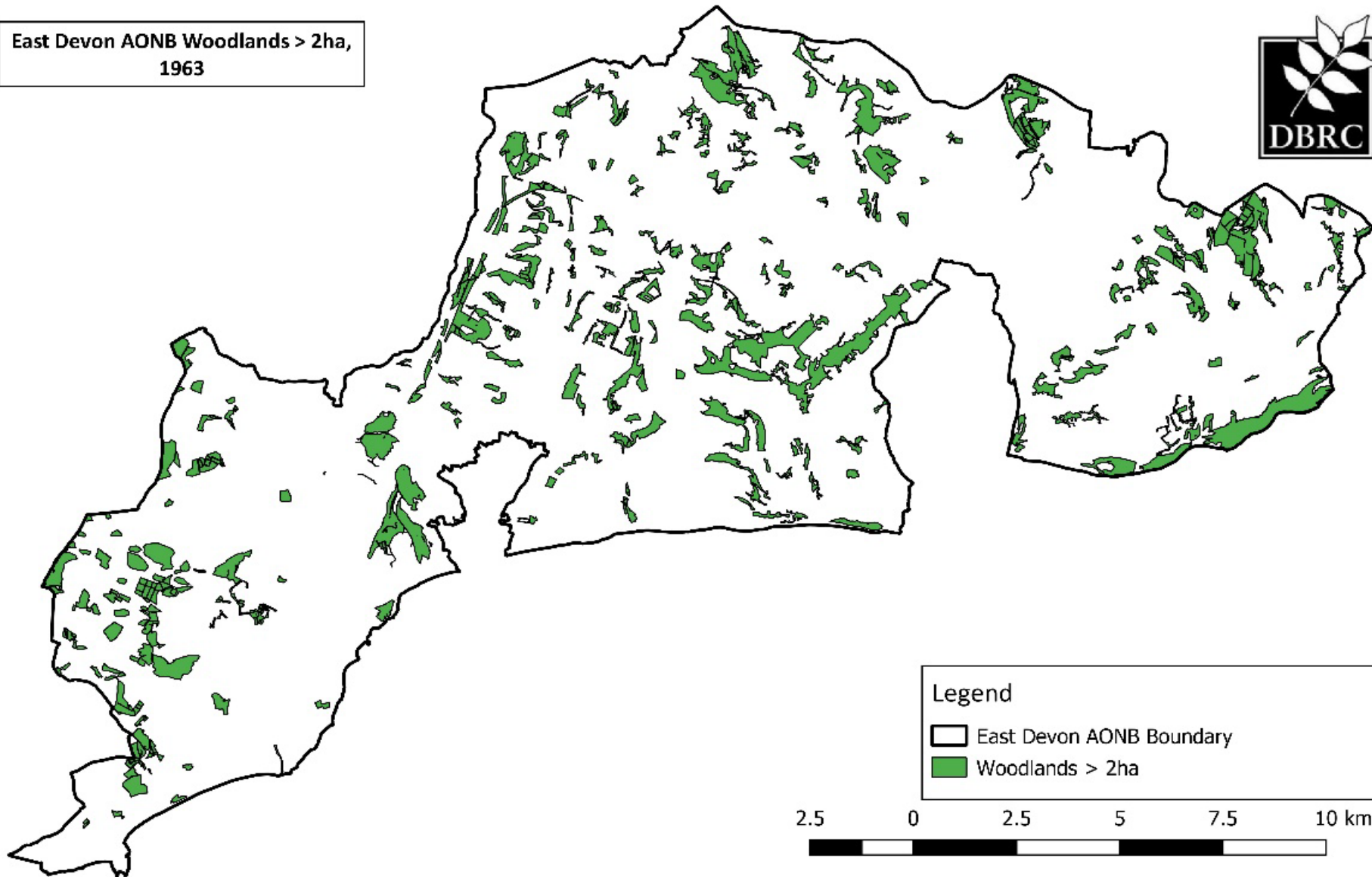


Changes since 1963

	1963		2004		2019		2022	
	(Designation)		(Management Plan)		(Colchester Declaration)		(Present)	
	ha	%	ha	%	ha	%	ha	%
Woodland cover	3083	11.4	4570	17.0	4504	16.7	4453	16.5
SSSI	1441	5.4	1797	6.7	1797	6.7	1797	6.7
SAC	0	0	0	0.0	1630	6.1	1630	6.1
SPA	0	0	1.5	0.0	1118	4.2	1118	4.2
NNR	262	1.0	262	1.0	262	1.0	1412	5.2
MCZ	0	0	0	0.0	21	0.1	21	0.1
CWS	0	0	1757	6.5	1876	7.0	1912	7.1
Scheduled Monuments	41	0.2	48	0.2	48	0.2	48	0.2
Registered Parks & Gardens	0	0	337	1.3	337	1.3	337	1.3
Total area with above designations ¹	1477	5.5	3858	14.3	3983	14.8	4043	15.0

Total AONB area (ha) 26930

East Devon AONB Woodlands > 2ha,
1963

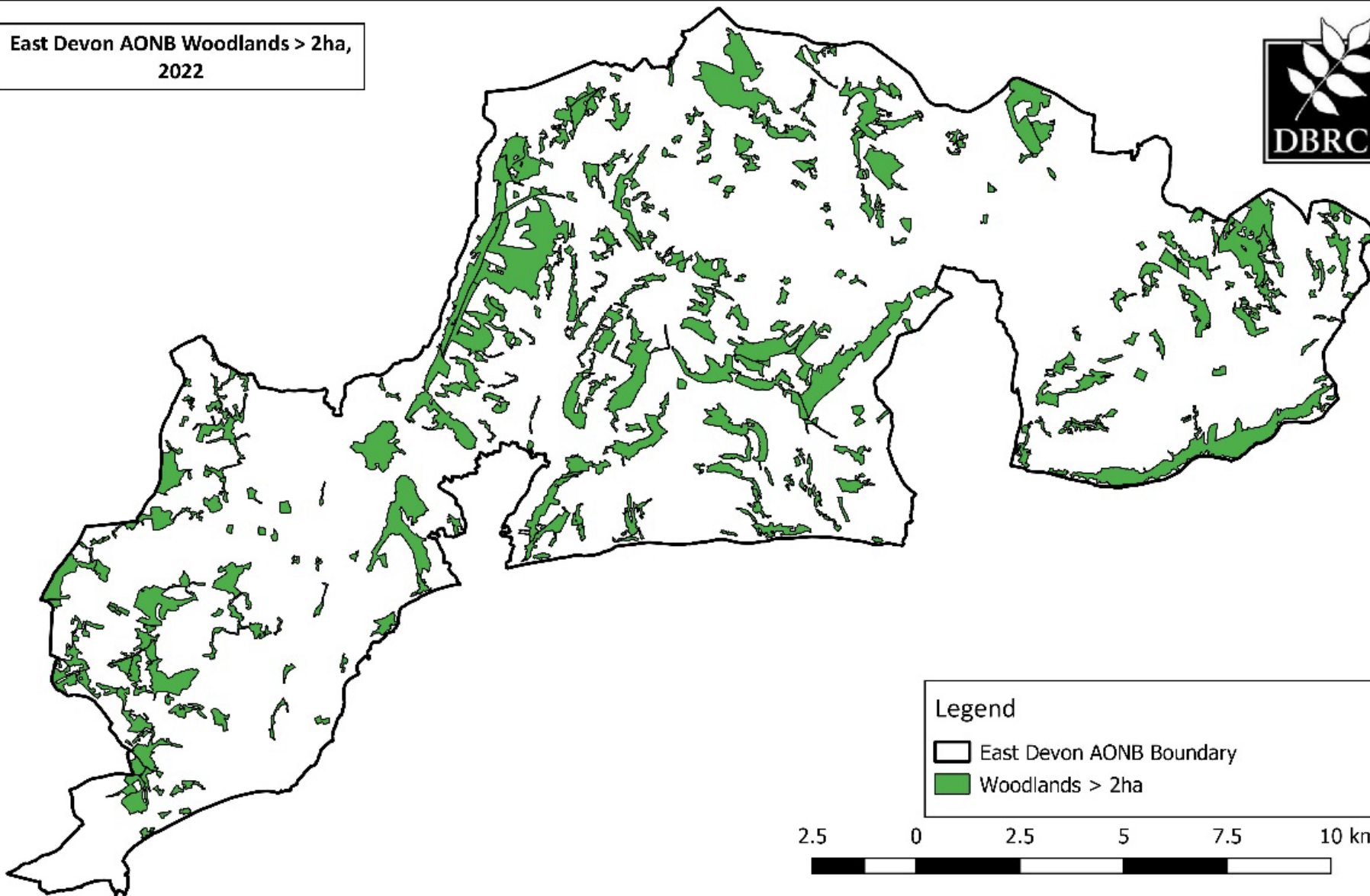


Legend
□ East Devon AONB Boundary
■ Woodlands > 2ha



Map contains Devon Biodiversity Records Centre data © cannot be copied, republished, or used for commercial purposes without prior permission. Includes Ordnance Survey mapping © provided by Devon County Council under licence. Unauthorised reproduction infringes Crown copyright and may lead to prosecution or civil proceedings. Map produced 2022.

East Devon AONB Woodlands > 2ha,
2022



Map contains Devon Biodiversity Records Centre data © cannot be copied, republished, or used for commercial purposes without prior permission. Includes Ordnance Survey mapping © provided by Devon County Council under licence. Unauthorised reproduction infringes Crown copyright and may lead to prosecution or civil proceedings. Map produced 2022.

Life on the river

River Otter Beaver Project



Lower Otter Restoration Project

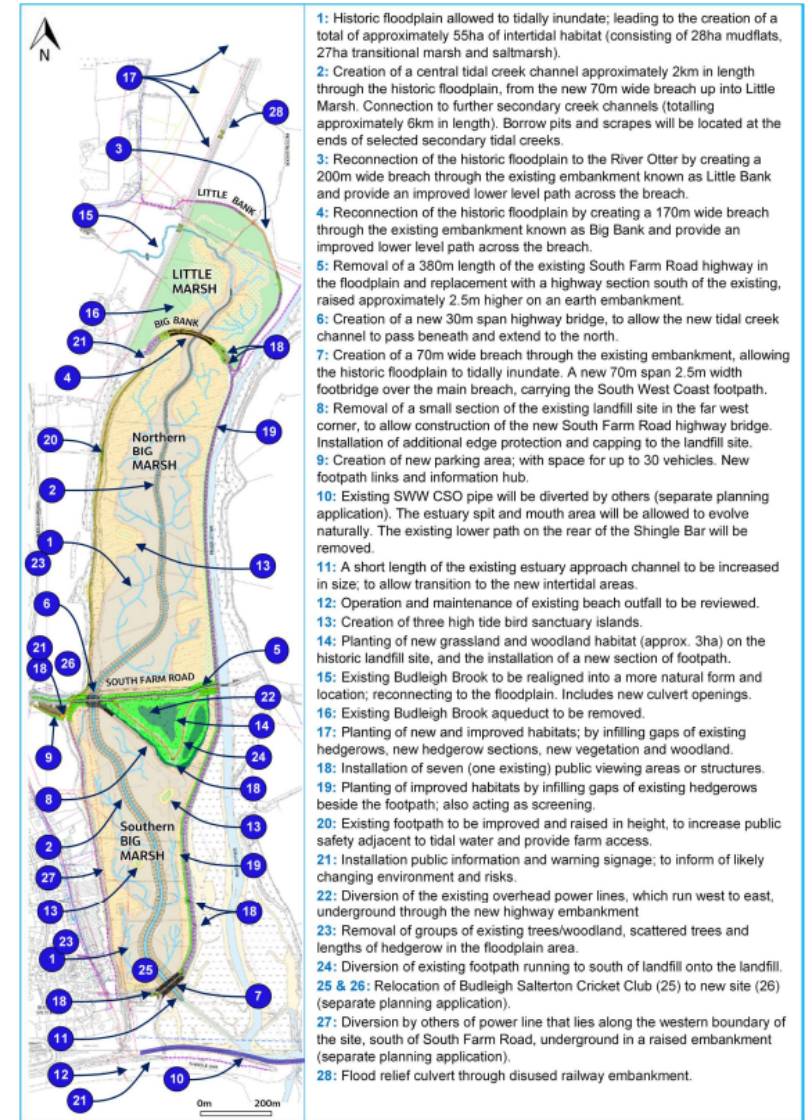


Figure 2.3 Proposed Scheme Overview Plan



European protected sites requiring nutrient neutrality strategic solutions
 Component SSSIs of
 River Axe SAC

Another river....The Axe

Nutrient neutrality – too many phosphates

Development plans can be considered ‘nutrient neutral’ where they can demonstrate that they will cause no overall increase in nutrient pollution affecting specified Habitats Sites

Options?

- building additional mitigation into their plans onsite
- working with the LPA to arrange for mitigation offsite, or
- purchasing nutrient credits via a nutrient trading scheme (where other landowners in the catchment have taken action to reduce their nutrient load)

Coastal and landscape change

Citizen science based monitoring



Looking ahead

Colchester Declaration and communities

- Special species work with our Elusive 8
- Nature Recovery Plan and community action
- Nature Connectedness through art
- Communities Project Fund

Land management

- Farming in Protected Landscapes fund
- Farmer networks and collaborations

AONB Partnership – operations and plan

- 2023 - 60th Anniversary of the AONB
- 2024/2025 - Review AONB Partnership Plan
- Continued Partnership working across Devon





Glover Review consultation

- New Management Plan Guidance for AONBs with targets for nature recovery and climate change
- National Landscape Partnership - generate income (private), partnerships, campaigns, skills/knowledge, influence direction/targets
- Strengthened purposes – for nature/biodiversity a single set of statutory purposes for AONB teams and National Park Authorities
- Second purpose for connecting society with protected landscapes
- More funding..... But not necessarily core
- Statutory planning consultee status for AONBs
- Central role in ELMS
- Renamed as National Landscapes

Thank you



EAST DEVON
Area of Outstanding Natural Beauty

for your participation

